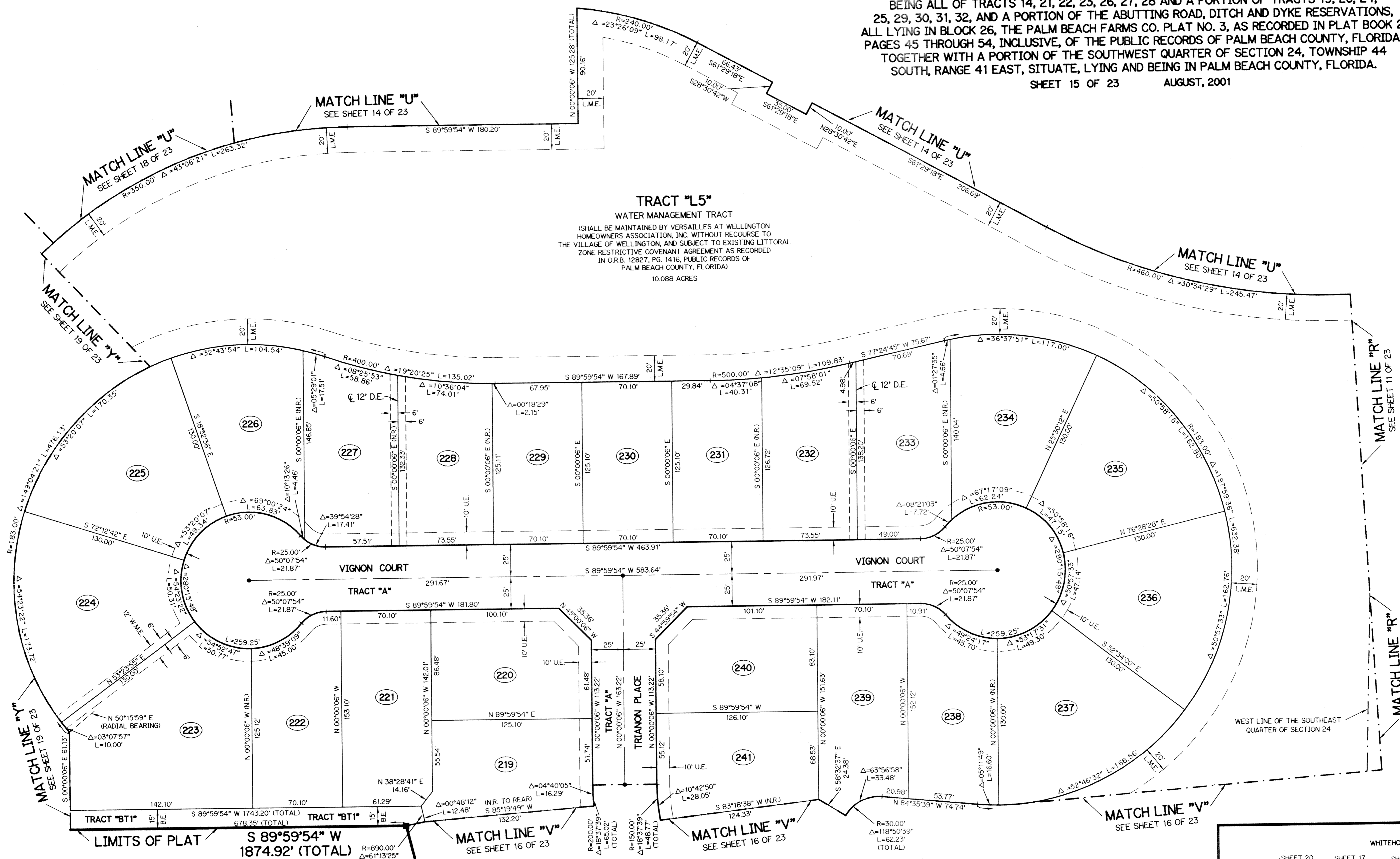


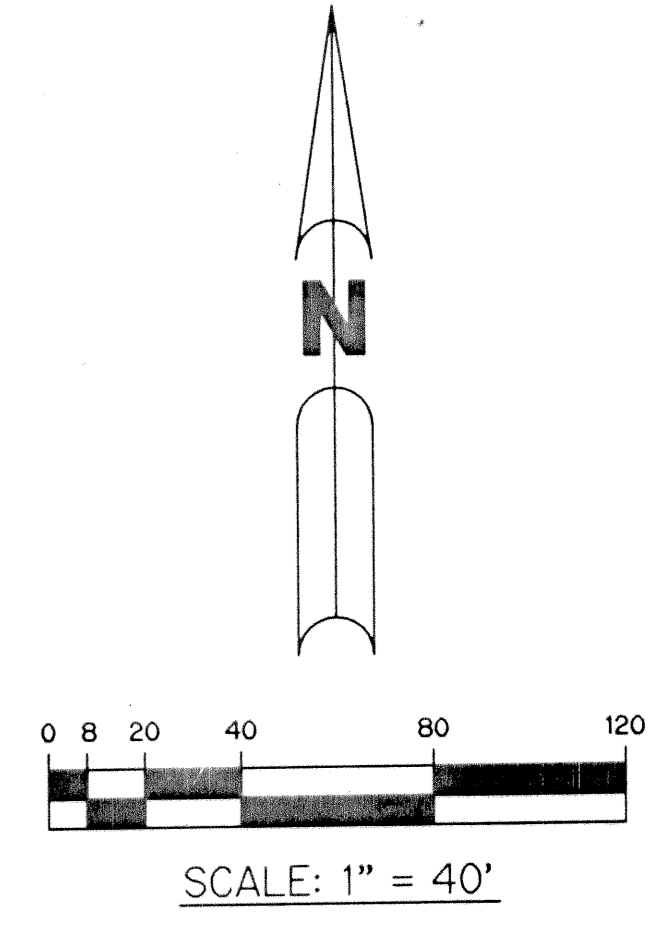
VERSAILLES P.U.D.

BEING ALL OF TRACTS 14, 21, 22, 23, 26, 27, 28 AND A PORTION OF TRACTS 19, 20, 24, 25, 29, 30, 31, 32, AND A PORTION OF THE ABUTTING ROAD, DITCH AND DYKE RESERVATIONS, ALL LYING IN BLOCK 26, THE PALM BEACH FARMS CO. PLAT NO. 3, AS RECORDED IN PLAT BOOK 2, PAGES 45 THROUGH 54, INCLUSIVE, OF THE PUBLIC RECORDS OF PALM BEACH COUNTY, FLORIDA, TOGETHER WITH A PORTION OF THE SOUTHWEST QUARTER OF SECTION 24, TOWNSHIP 44 SOUTH, RANGE 41 EAST, SITUATE, LYING AND BEING IN PALM BEACH COUNTY, FLORIDA.

SHEET 15 OF 23 AUGUST, 2001



TRACT "L5"
 WATER MANAGEMENT TRACT
 (SHALL BE MAINTAINED BY VERSAILLES AT WELLINGTON HOMEOWNERS ASSOCIATION, INC. WITHOUT RECOURSE TO THE VILLAGE OF WELLINGTON, AND SUBJECT TO EXISTING LITTORAL ZONE RESTRICTIVE COVENANT AGREEMENT AS RECORDED IN O.R.B. 12827, PG. 1416, PUBLIC RECORDS OF PALM BEACH COUNTY, FLORIDA)
 10.088 ACRES



WYCLIFFE TRACT "N"
 (PER P. B. 84, PG. 59)

- LEGEND:**
- - SET PERMANENT REFERENCE MONUMENT, LB-6674
 - - PERMANENT CONTROL POINT, LB-6674
 - Δ - DELTA ANGLE
 - B.E. - BUFFER EASEMENT
 - C. - CENTERLINE
 - C.B. - CHORD BEARING
 - C.H. - CHORD LENGTH
 - D.B. - DEED BOOK
 - D.E. - DRAINAGE EASEMENT
 - F.M.E. - FORCE MAIN EASEMENT
 - L. - ARC LENGTH
 - L.A.E. - LIMITED ACCESS EASEMENT
 - L.M.A.E. - LAKE MAINTENANCE ACCESS EASEMENT
 - L.M.E. - LAKE MAINTENANCE EASEMENT
 - L.W.D.D. - LAKE WORTH DRAINAGE DISTRICT
 - N.R. - NOT RADIAL
 - N.T.S. - NOT TO SCALE
 - O.R.B. - OFFICIAL RECORD BOOK
 - P.B. - PLAT BOOK
 - P.G.S. - PAGES
 - P.S.M. - PROFESSIONAL SURVEYOR AND MAPPER
 - R.W.M.E. - RAW WATER MAIN EASEMENT
 - R. - RADIUS
 - R/W - RIGHT-OF-WAY
 - S.S.E. - SANITARY SEWER EASEMENT
 - S.T. - SURVEY TIE
 - U.E. - UTILITY EASEMENT
 - W.M.E. - WATER MAIN EASEMENT

THIS INSTRUMENT PREPARED BY
 PERRY C. WHITE, P.S.M. 4213, STATE OF FLORIDA
 LAWSON, NOBLE AND WEBB, INC., LB-6674
 ENGINEERS PLANNERS SURVEYORS
 420 COLUMBIA DRIVE, SUITE 110
 WEST PALM BEACH, FLORIDA

